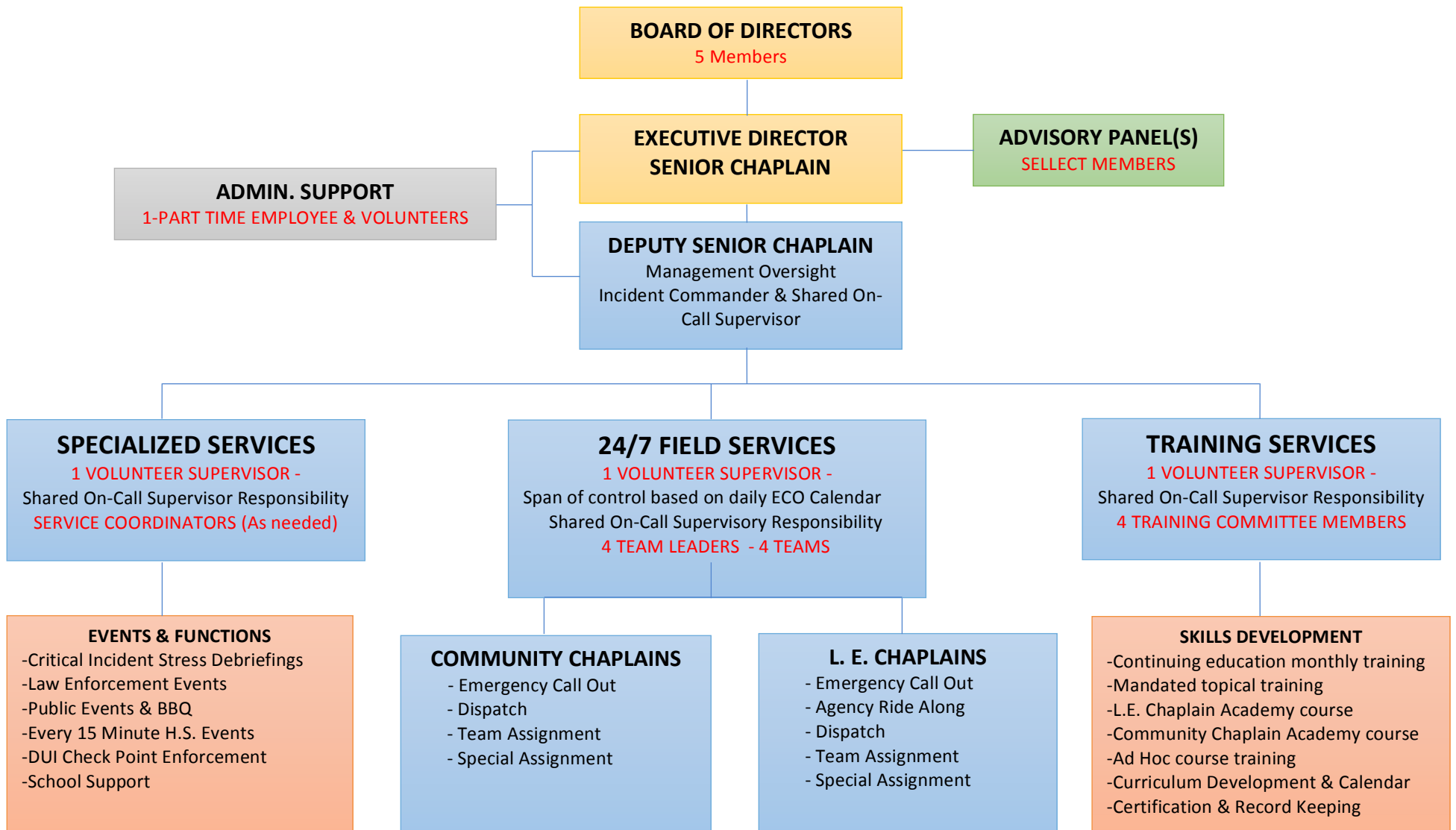


ORGANIZATION CHART



Board of Directors & Executive Director/Senior Chaplain establish chaplaincy mandates, LE & Public administrative level liaison, written policy adoption, budget management and acquiring funding sources. Senior chaplain is also responsible for the administration of the entire operation, but does not act as an incident commander.

Assistant Senior Chaplain has managerial responsibility for services and training which is divided into three aspects, each under the supervision of a volunteer supervisor with on-call responsibility. Community & LE chaplains are divided into four mixed teams with a team leader responsible for each. Chaplains maintain minimum ECO and ride along standards and may serve in various capacities related to the three services, administrative support and/or the advisory panel(s).

These elements emphasize the full-service nature of the chaplaincy and the need for appointed knowledge based coordinators, committee members and instructors.